

Entry Signal

- **Buy signal of a particular pair will be generated once all the following indicators agree (if pair is selected). (Refer to screenshot3)**
 - Price is above MA1 (if selected)
 - Price is above MA2 (if selected)
 - RSI (if selected)
 - Current RSI > previous RSI
 - Current RSI < RSI Overbought Area
 - CCI (if selected)
 - Current CCI > previous CCI
 - Current CCI > CCI Buy Area
- **Sell signal of a particular pair will be generated once all the following indicators agree (if pair is selected). (Refer to screenshot3)**
 - Price is below MA1 (if selected)
 - Price is below MA2 (if selected)
 - RSI (if selected)
 - Current RSI < previous RSI
 - Current RSI > RSI OverSold Area
 - CCI (if selected)
 - Current CCI < previous CCI
 - Current CCI < CCI Sell Area

Screenshot2

Trading

		MA1	MA2	RSI		CCI	
Pair	Sprd			C	P	C	P
AUDCAD	1.1			38.9	39.7	-161.1	-154.1
AUDCHF	1.1			34.8	35.9	-180.8	-176.1
AUDJPY	0.7			24.5	27.6	-280.2	-310.8
AUDNZD	1.4			43.1	44.3	-64.1	-67.9
AUDUSD	0.4			27.6	30.9	-286.9	-324.7
CADCHF	0.8			43.2	43.7	-45.0	-47.1
CADJPY	0.9			27.7	31.4	-163.6	-142.5
CHFJPY	1.4			34.7	38.4	-214.5	-182.6
EURAUD	1.4			55.8	55.6	69.2	83.4
EURCAD	1.0			43.7	44.5	-102.9	-64.5
EURCHF	1.1			31.0	32.7	-208.9	-213.2
EURGBP	0.5			46.6	52.9	-48.2	32.5
EURJPY	0.7			26.4	29.8	-241.8	-252.7
EURNZD	2.6			50.0	50.6	-21.7	-2.8
EURUSD	0.0			25.9	30.2	-282.9	-259.5
GBPAUD	3.1			57.0	51.6	80.6	17.7
GBPCAD	2.4			49.5	42.7	-54.1	-124.2
GBPCHF	2.6			44.6	38.9	-63.0	-97.6
GBPJPY	2.0			33.4	33.4	-132.0	-160.0
GBPNZD	4.6			53.7	47.7	46.9	-65.1
GBPUSD	1.3			38.1	35.6	-122.5	-152.8
NZDCAD	1.4			44.0	43.9	-123.1	-101.3
NZDCHF	1.9			39.4	39.8	-95.3	-84.3
NZDJPY	1.3			26.7	29.6	-170.3	-156.9
NZDUSD	0.8			32.6	35.6	-169.8	-152.0
USDCAD	0.8			66.6	62.3	131.4	104.5
USDCHF	0.6			61.8	55.6	126.9	44.1
USDJPY	0.3			35.6	37.5	-150.1	-150.9

1 Check selected indicators

3 Pair selected

4 Signal generated

2 All indicators agree with same direction

Note

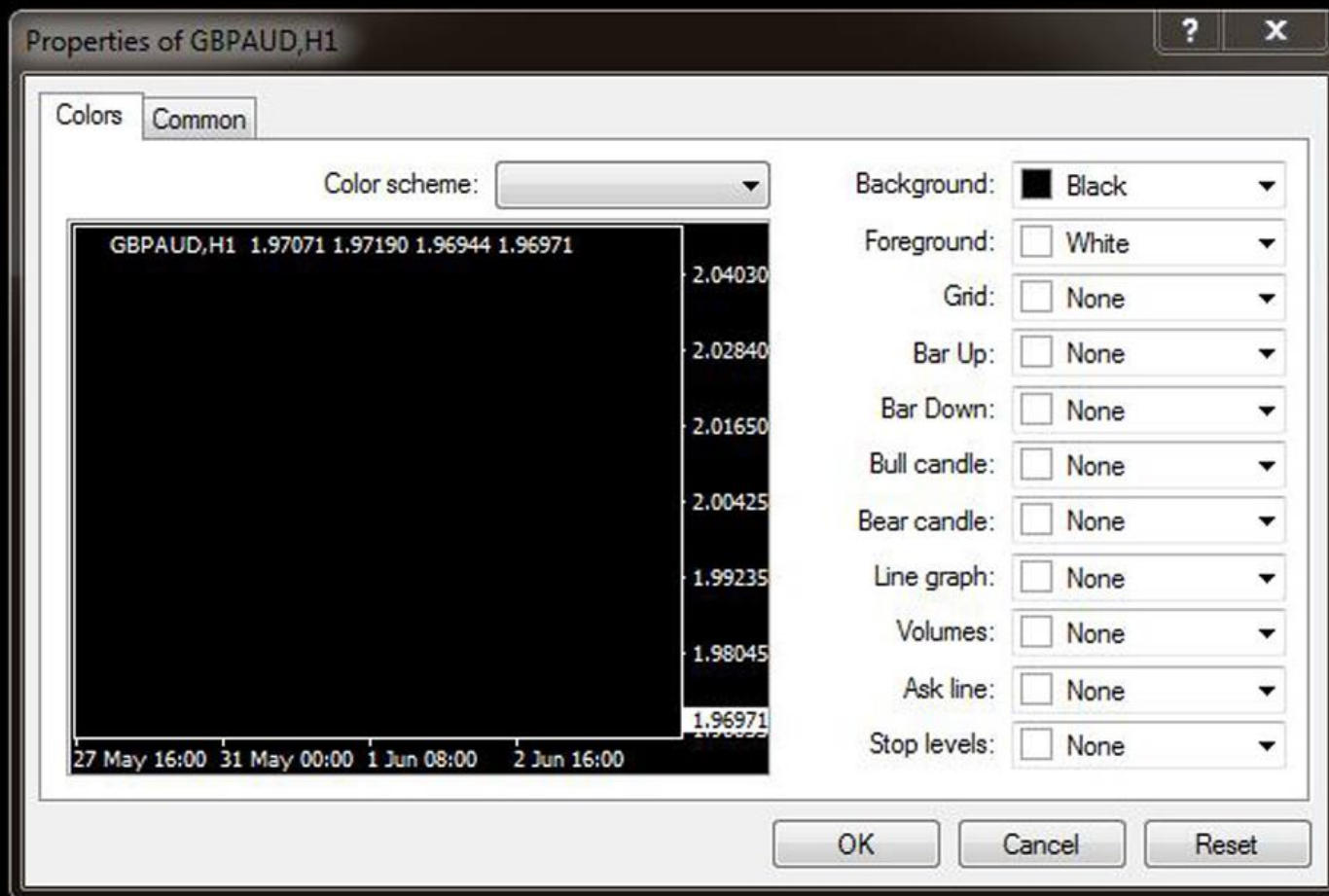
Note1: Basket means all active (open) positions opened by this dashboard with the same magic number. The basket profit is the total profit of all these active positions. e.g. Dashboard open 10 positions (not close yet), each order has a profit of \$2. So the total profit is $10 \times \$2 = \20 . If the basket take profit is \$20, then the basket TP will be hit.

Note2: autotrade will open at most 1 position per pair based on signal generated. If signal occurs but position already exists for a particular pair, no order will be sent. However, you can manually click on 'buy' and/or 'sell' button to any number of positions you want (click once send one order).

Note3: Once alert/notification of a particular pair has been sent, the next alert/notification of that pair will be sent after 5 minutes upon signal. The alert and notification are implemented in this way to make sure you receive them once during a certain period instead of numerous alerts/notification coming to you continuously.

Screenshot4

GBPAUD,H1 1.97071 1.97190 1.96944 1.96971



Screenshot5

6 May 2016 9 May 08:00 10 May 16:00 12 May 00:00 13 May 08:00 16 May 16:00 18 May 00:00 19 May 08:00 20 May 16:00 24 May 00:00 25 May 08:00 26 May 16:00 30 May 08:00

GBPAUD,H1

EURUSD,M1

Trading

MA1

MA2

RSI

CCI

4 Indicator Status Panel

1 Pair Tick Button

2 Pair Symbol Button

Pair	Sprd	MA1	MA2	C	P	C	P
AUDCAD	1.1			38.9	39.7	-161.1	-154.1
AUDCHF	1.1			34.8	35.9	-180.8	-176.1
AUDJPY	0.7			24.5	27.6	-280.2	-310.8
AUDNZD	1.4			43.1	44.3	-64.1	-67.9
AUDUSD	0.4			27.6	30.9	-286.9	-324.7
CADCHF	0.8			43.2	43.7	-45.0	-47.1
CADJPY	0.9			27.7	31.4	-163.6	-142.5
CHFJPY	1.4			34.7	38.4	-214.5	-182.6
EURAUD	1.4			55.8	55.6	69.2	83.4
EURCAD	1.0			43.7	44.3	-102.9	-64.5
EURCHF	1.1			31.0	32.7	-208.9	-212.2
EURGBP	0.5			46.6	52.9	-48.2	32.5
EURJPY	0.7			26.4	29.8	-241.8	-252.7
EURNZD	2.6			50.0	50.6	-21.7	-2.8
EURUSD	0.0			25.9	30.2	-282.9	-259.5
GBPAUD	3.1			57.0	51.0	80.6	17.7
GBPCAD	2.4			49.5	42.7	-54.1	-124.2
GBPCHF	2.6			44.6	38.9	-63.0	-97.6
GBPJPY	2.0			33.4	33.4	-132.0	-160.0
GBPNZD	4.6			53.7	47.7	46.9	-65.1
GBPUSD	1.3			38.1	35.6	-122.5	-152.8
NZDCAD	1.4			44.0	43.9	-123.1	-101.3
NZDCHF	1.9			39.4	39.8	-95.3	-84.3
NZDJPY	1.3			26.7	29.6	-170.3	-156.9
NZDUSD	0.8			32.6	35.6	-169.8	-152.0
USDCAD	0.8			66.6	62.3	131.4	104.5
USDCHF	0.6			61.8	55.6	126.9	44.1
USDJPY	0.3			35.6	37.5	-150.1	-150.9

3 Spread Column

5 Indicator Trend Panel

Screenshot6

			Buy	Sell	Symbol	Profit	
6 Buy Button	→	B	0.00	0.00	AUDCAD	0.00	
		S	0.00	0.00	AUDCHF	0.00	9 Buy Volume Column
		C	0.00	0.00	AUDJPY	0.00	
		B	0.00	0.00	AUDNZD	0.00	10 Sell Volume Column
		S	0.00	0.00	AUDUSD	0.00	
7 Sell Button	→	S	0.00	0.00	CADCHF	0.00	
		C	0.00	0.00	CADJPY	0.00	11 Symbol Column
		B	0.00	0.00	CHFJPY	0.00	
		S	0.00	0.00	EURAUD	0.00	
8 Close Button	→	C	0.00	0.00	EURCAD	0.00	12 Profit Column
		B	0.00	0.00	EURCHF	0.00	
		S	0.00	0.00	EURGBP	0.00	
		C	0.00	0.00	EURJPY	0.00	
		B	0.00	0.00	EURNZD	0.00	
		S	0.00	0.00	EURUSD	0.00	
		C	0.00	0.00	GBPAUD	0.00	
		B	0.00	0.00	GBPCAD	0.00	
		S	0.00	0.00	GBPCHF	0.00	
		C	0.00	0.00	GBPJPY	0.00	
		B	0.00	0.00	GBPNZD	0.00	
		S	0.00	0.00	GBPUSD	0.00	
		C	0.00	0.00	NZDCAD	0.00	
		B	0.00	0.00	NZDCHF	0.00	
		S	0.00	0.00	NZDJPY	0.00	
		C	0.00	0.00	NZDUSD	0.00	
		B	0.00	0.00	USDCAD	0.00	
		S	0.00	0.00	USDCHF	0.00	
		C	0.00	0.00	USDJPY	0.00	

Screenshot7

13 Profit Baskets

Profit Baskets=

0

14 Basket TP

Basket TP = \$

15.00

Highest= \$

0.00

15 Basket Highest

16 Loss Baskets

Loss Baskets=

0

17 Basket SL

Basket SL = \$-

15.00

Lowest= \$-

0.00

18 Basket Lowest

19 Current Basket
Profit

0.00

Screenshot8

20 Close All

CLOSE ALL

CLOSE PROFIT

CLOSE LOSS

21 Close Profit

22 Close Loss

Trading

23 Session Monitor Panel

24 AutoTrade Monitor Panel

25 Pair/Currency Selection Button

AutoTrade

ON

All

None

EUR

USD

GBP

JPY

AUD

CAD

NZD

CHF

Screenshot9